

ADJUSTMENT

See 1.12 CLUTCH.

REMOVAL/DISASSEMBLY

Clutch Cable-Lower

1. Raise rear wheel off floor using REAR WHEEL SUPPORT STAND (Part No. B-41174).
2. See Figure 2-132. Remove four TORX screws (1) with washers and clutch inspection cover (2). Do not damage or dislodge quad ring (14) in primary cover (11).
3. Slide spring (3) with attached hex lockplate (4) from flats of adjusting screw (12).
4. Turn adjusting screw clockwise to release ramp and coupling mechanism. As the adjusting screw is turned, ramp assembly moves forward. Unscrew nut (5) from end of adjusting screw.
5. Remove hook of ramp (6) from button at the rear of cable end coupling (16). Remove cable end (10) from slot in coupling.
6. Turn cable end fitting (9) counterclockwise to remove clutch cable lower section from primary cover (11). Remove O-ring (8) from cable end fitting.

Clutch Hand Control

1. See Figure 2-133. Detach clutch switch (7).
 - a. Remove screw (8).
 - b. Depress clutch lever and hold.
 - c. Detach switch by depressing switch trigger button and pulling switch towards the end of the handlebar.

NOTE

The individual parts of the clutch switch are not serviceable. Replace switch upon failure.

2. Remove bolt (2) (metric) and nut (6) (metric).
3. Remove handlebar from clutch clamp (5). Detach clutch cable from handlebar.
4. Remove clutch cable clamp (10) from frame.
5. Remove clutch clamp.
 - a. Cut off left handgrip.
 - b. Remove left handlebar switch housing. See 7.16 HANDLEBAR SWITCHES.
 - c. Remove clamp screw (4) (metric). Slide clamp off the end of the handlebar.

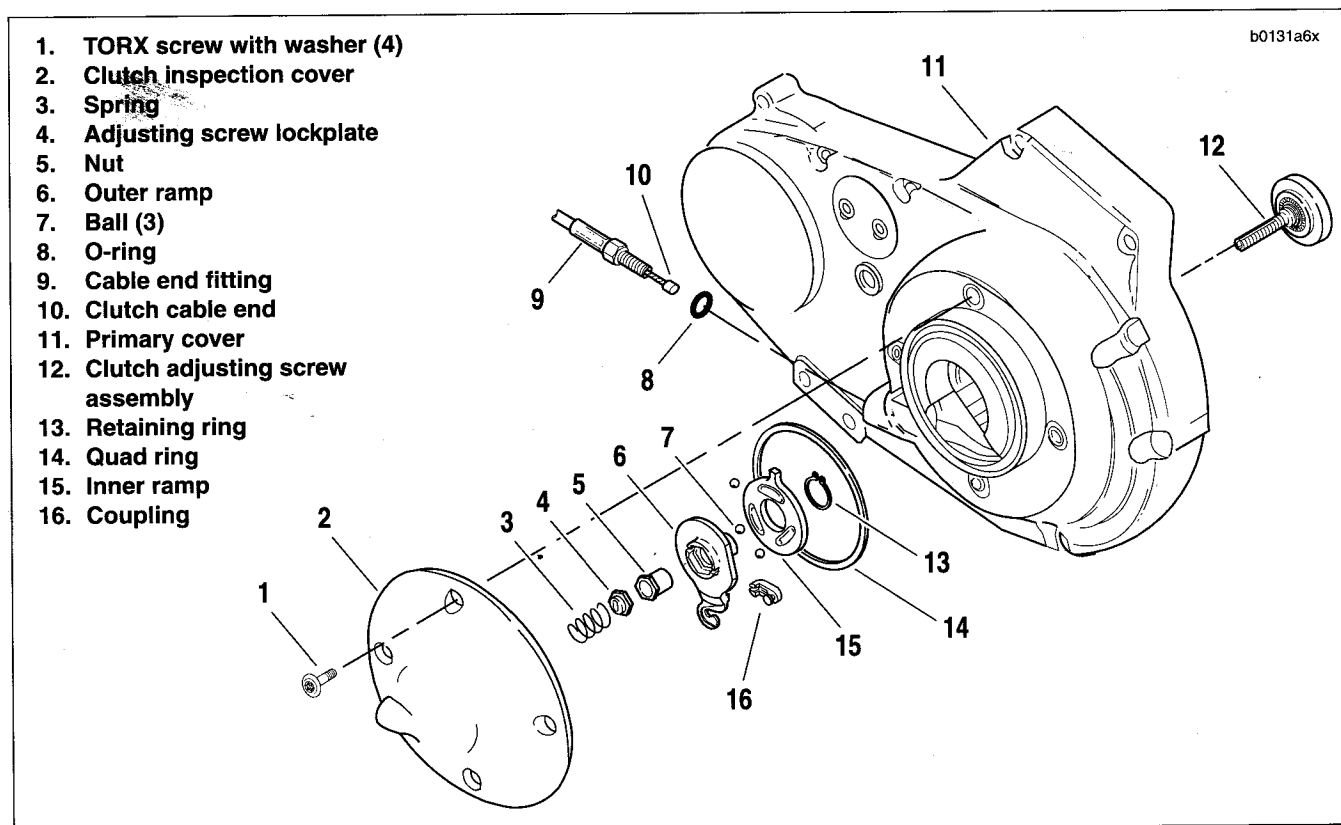


Figure 2-132. Clutch Release Mechanism