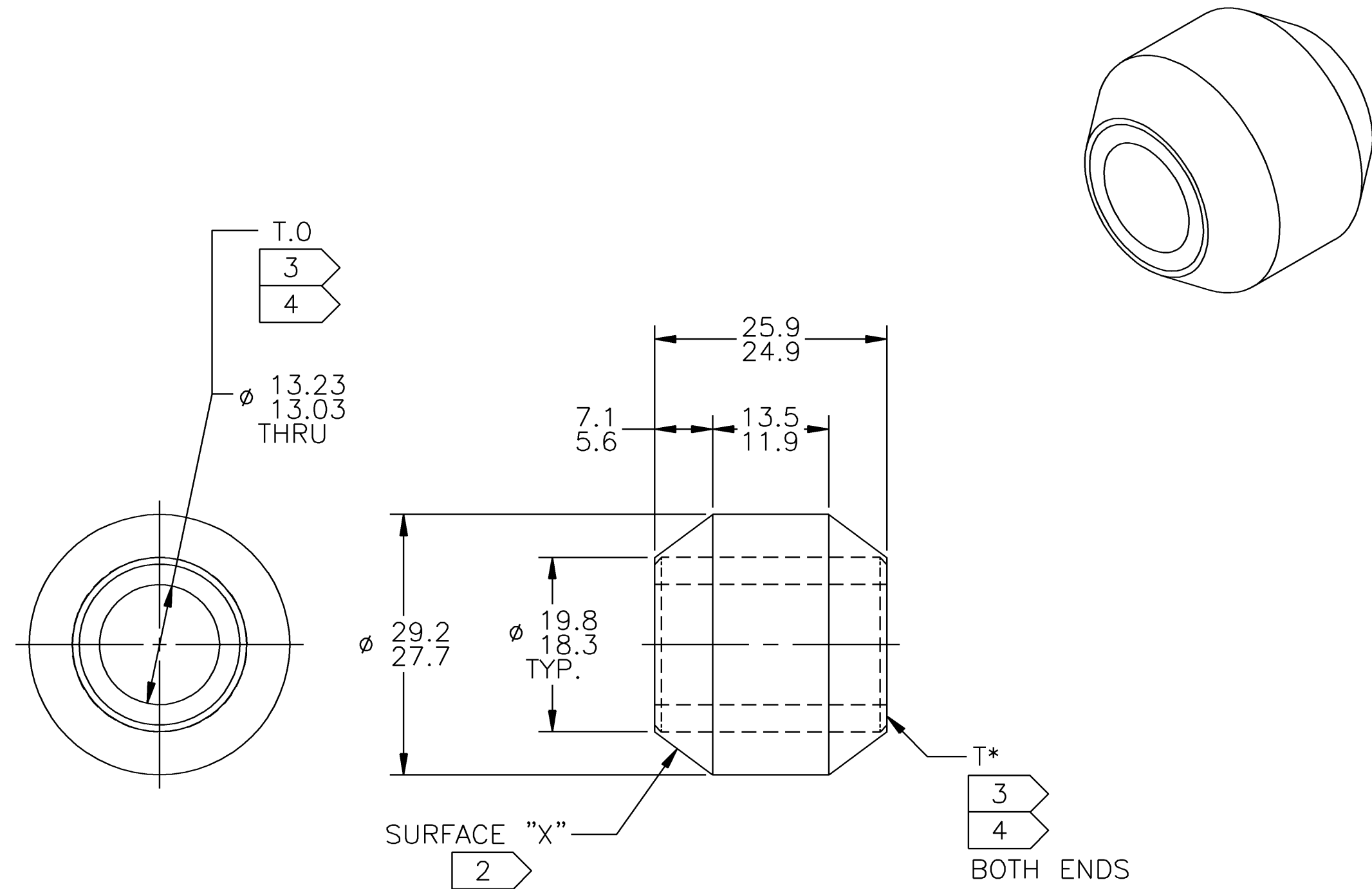


THE INFORMATION CONTAINED HEREIN IS PROPRIETARY TO LORD CORPORATION AND SHALL NOT BE REPRODUCED OR DISCLOSED IN WHOLE OR IN PART OR USED FOR ANY DESIGN OR MANUFACTURE EXCEPT WHEN SUCH USER POSSESSES DIRECT, WRITTEN AUTHORIZATION FROM LORD CORPORATION.

LET.	ALTERATION	DR.	CK.
E	45602	JJH	KJH 4/8/2002

LORD PROPRIETARY



NOTES: (UNLESS OTHERWISE SPECIFIED)

1. MATERIAL:
INNER MEMBER - STEEL
ELASTOMER - RUBBER
2. LORD IDENTIFICATION EMBOSSED ON SURFACE "X".
3. SURFACES MARKED T* MAY HAVE A .13 mm MAXIMUM TIGHT SKIN OF ELASTOMER.
SURFACES MARKED T.O TO BE FREE OF ELASTOMER.
4. SURFACES MARKED T.O TO BE FREE OF ADHESIVE OVERSPRAY.
SURFACES MARKED T* MAY HAVE ADHESIVE OVERSPRAY.

10 PIECES PER PACK	J-3830-6A
BULK PACK	J-3830-6
PACKAGING INSTRUCTIONS	PART NO.

UNLESS OTHERWISE SPECIFIED		LORD ® MECHANICAL PRODUCTS Erie, Pa. 16514-0040	
F.M.P. = FOR MANUFACTURING PURPOSES ALL DIMENSIONS ARE TO POINTS OF INTERSECTION DIMENSIONING/TOLERANCING PER ASME Y14.5M - 1994 ABBREVIATIONS, ACRONYMS, TERMINOLOGY PER TS-027 BREAK ALL SHARP EDGES DIMENSIONS IN () ARE IN INCHES		JOINT, CENTER BONDED	
METRIC		DR. BY J.J. HOMCHENKO 8/5/87	CAGE 76005
CALC. WT. .037 (KG.)		CKD. BY K.J. HEDDERICK 8/5/87	
ELASTOMER VOL (CU. CM.) ----		ENGR. APPR. R. WELCH 8/5/87	SIZE C
		MFG. APPR. R.T.A. 8/11/87	DRAWING NO. J - 3830 - 6
		Q.E. APPR. J.D. GIKNIS 8/14/87	REV E
			SH 1 OF 1