

FRONT FORK

STEERING HEAD BEARINGS

Check steering head bearings:

- At the 500 mile (800 km) service interval.
- At every 5000 mile (8000 km) service interval thereafter.
- Lubricate every 10,000 mile (16,000 km) service interval.

1. See [Figure 1-32](#). Lift motorcycle using [FRONT WHEEL SUPPORT STAND \(Part No. B-41395\)](#) and [S1 LIFT ADAPTER \(Part No. B-41686\)](#) so front wheel is off the ground.
2. Turn front wheel to full right lock.
3. Hook a spring scale into the axle hole and pull front wheel to center position.

It should take 3.5-5.5 lbs (1.6-2.5 kg) to pull front wheel to center.

NOTE

Check that clutch and throttle cables do not bind when measuring bearing resistance.

Lubrication

At 10,000 miles (16,000 km) and every 10,000 miles (16,000 km) thereafter, grease the steering head bearings with [WHEEL BEARING GREASE \(Part No. 99855-89\)](#).

See [FORK STEM AND BRACKET ASSEMBLY](#) in Section 2 for lubrication procedure.

ADJUSTMENT

1. Raise front wheel off floor using [FRONT WHEEL SUPPORT STAND \(Part No. B-41395\)](#) and [S1 LIFT ADAPTER \(Part No. B-41686\)](#).
2. Turn front wheel to full right lock.
3. See [Figure 1-32](#). Hook spring scale into front axle hole. Pull front wheel to center position. It should take 3.5-5.5 lbs (1.6-2.5 kg) to pull front wheel to center.
4. Loosen pinch screws (7) on upper and lower triple clamps.
5. See [Figure 1-33](#). Tighten or loosen fork stem bolt (1) to set proper tension.
6. Recheck tension using spring scale. See Step 3.
7. Tighten triple clamp pinch screws (7) to 18-20 ft-lbs (24.4-27.1 Nm).

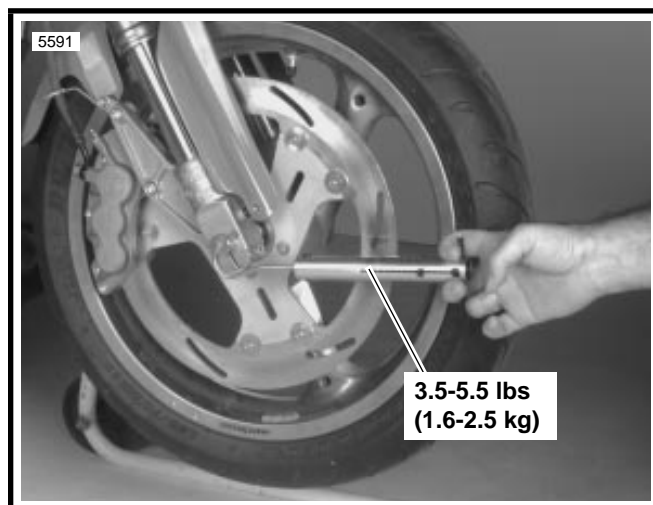


Figure 1-32. Checking Steering Head Bearings

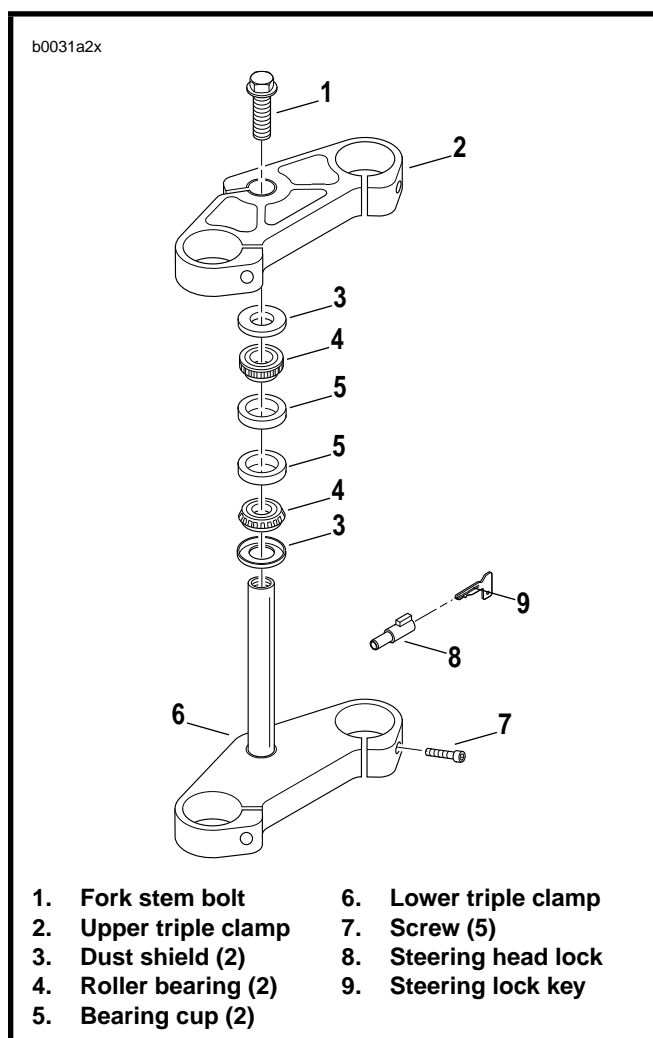


Figure 1-33. Steering Head Assembly

FORK OIL CHANGE

Replace fork oil:

- At every 10,000 mile (16,000 km) service interval.
 - If fork should be submerged in water.
1. Remove and disassemble front forks. See [FRONT FORK](#) in Section 2.

NOTE

If fork oil is emulsified, aerated or light brown in color, then it has been contaminated by water. If this happens, replace the fork oil seals.

2. Drain forks of oil.
3. With fork in fully compressed stage, add WP FORK OIL, 5 WEIGHT to above red retaining cap.

CAUTION

See [Figure 1-34](#). Raise outer tube no higher than 9 in. (229 mm) or fluid loss will occur.

4. See [Figure 1-35](#). Grasp damper assembly by the adjuster. Pull damper assembly through several full strokes to bleed air from the fork.
5. With front fork fully compressed, clamp vertically in [FRONT FORK HOLDING TOOL](#) (Part No. B-41177).
6. Measure distance from fork oil surface to top of tube using [PRO-LEVEL OIL GAUGE](#) (Part No. B-59000A). Add or drain fork oil as needed until distance from top of fork tube to oil surface measures 4.33 in. (110 mm). See [Figure 1-36](#).
7. Assemble front fork and install. See [FRONT FORK](#) in Section 2.

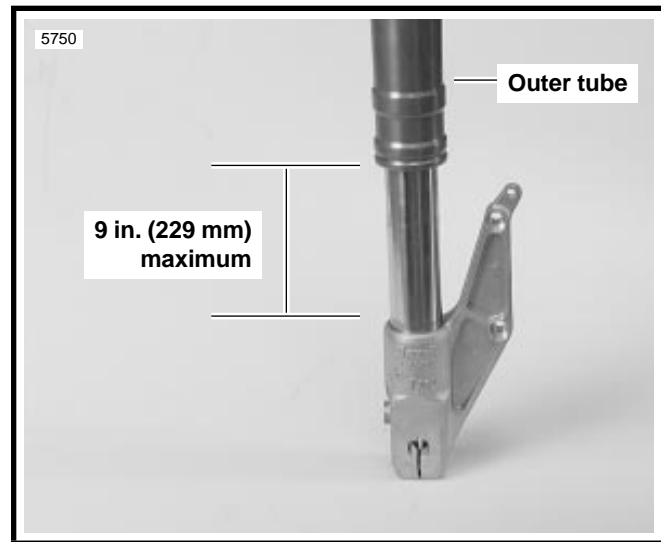


Figure 1-34. Maximum Outer Tube Lift

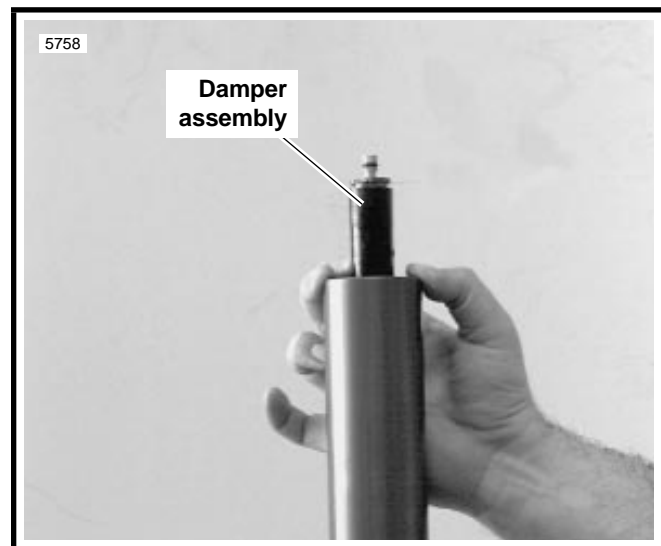


Figure 1-35. Bleeding Fork

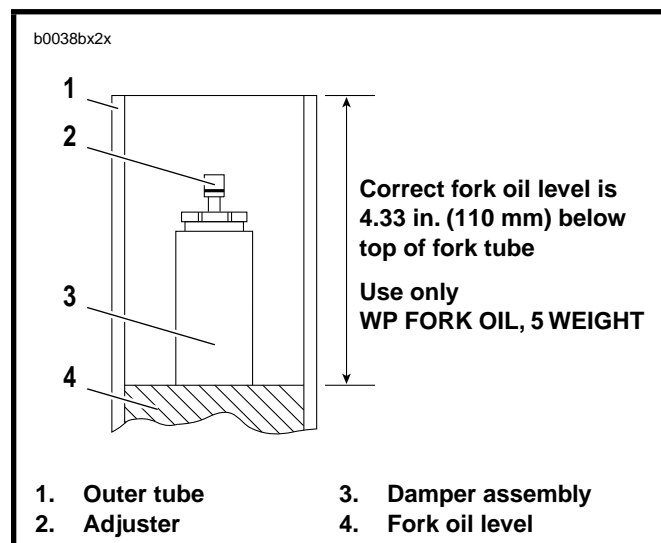


Figure 1-36. Correct Fork Oil Level