

ADJUSTMENT

1. See [Figure 6-54](#). Lift pawl over drum pins and place shifter shaft assembly on studs at transmission case. Loosely install a washer and locknut on each stud.

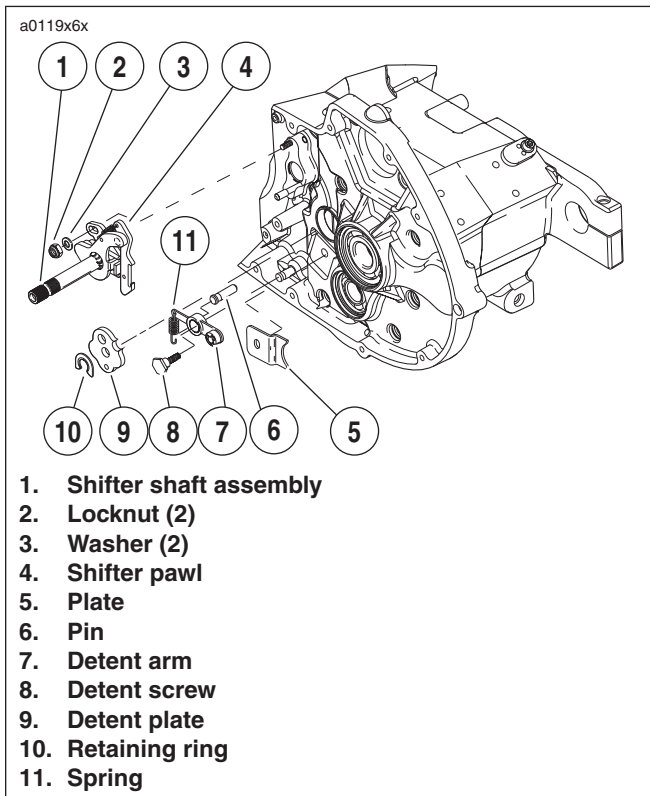


Figure 6-54. Installing Shifter

2. Install detent plate.
 - a. Place detent plate (9) over drum pins.
 - b. Rotate plate until blind holes in plate align with pins in end of shifter fork drum.
 - c. Install **new** retaining ring (10) using SHIFT DRUM RETAINING RING INSTALLER (Part No. HD-39151).
3. Verify that retaining ring is fully engaged with drum groove.
4. Attach loop of spring (11) over and into groove in pin (6).

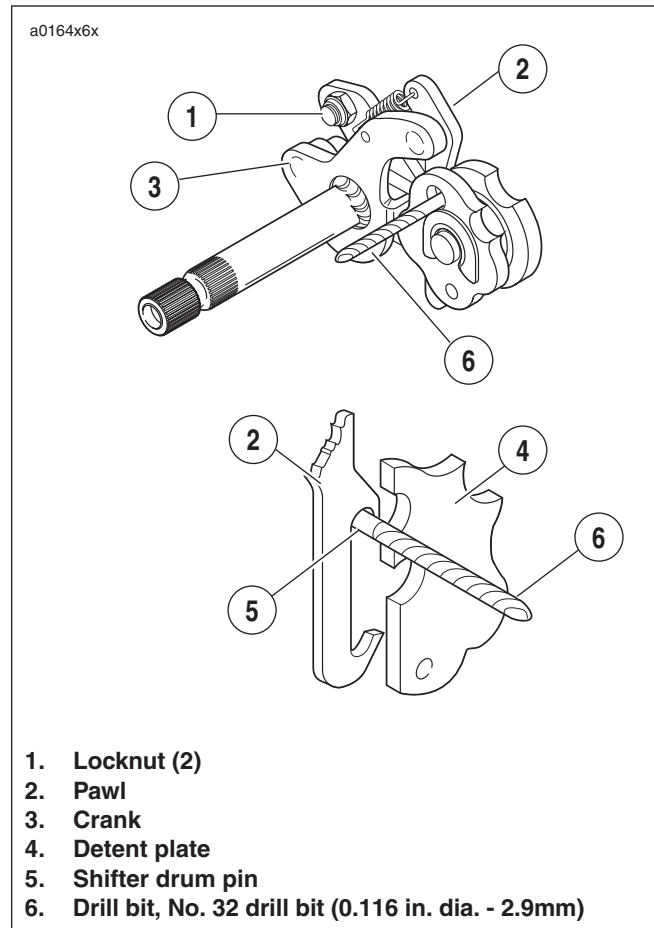


Figure 6-55. Shifter Shaft Assembly Alignment

5. See [Figure 6-55](#). Align shifter shaft.
 - a. Place transmission in third gear.
 - b. Place a No. 32 drill bit (0.116 in. dia.) through hole in detent plate (4), and between pawl (2) and drive pin at end of shifter drum shaft.
 - c. Push down top of crank (3) to remove all clearance between pawl and drill bit; this will correctly align pawl to shift drum pins (do not push down with too great a force, as this might cause the shifter drum to rotate).
 - d. With bit in place, tighten shifter shaft assembly bottom locknut (1) first to 90-110 **in-lbs** (10-12 Nm). Then, tighten shifter shaft assembly top locknut (1) to the same torque.
 - e. **Remove drill bit.**