

## REAR WHEEL BEARING KIT

### GENERAL

#### Kit Number

G1321.02A8, G1321.1AM

#### Models

For the most up-to-date model fitment information, see product label or [www.buell.com](http://www.buell.com) (English only).

#### Additional Parts Required

### WARNING

The rider's safety depends upon the correct installation of this kit. Use the appropriate service manual procedures. If the procedure is not within your capabilities or you do not have the correct tools, have a Buell dealer perform the installation. Improper installation of this kit could result in death or serious injury. (00334a)

This kit requires the separate purchase of the following parts and tools (see Table 1) which are available from a Buell dealer:

**Table 1. Special Tools and Additional Parts**

Description	Part Number
Sprocket Screw (6)	See Buell Dealer
Brake Rotor Screw (6)	See Buell Dealer
Buell Wheel Bearing Installer/Remover	B-50019
Axle Wrench	B-46279
Wheel Bearing Installer and Remover	HD-44060-A
Extreme Pressure Lubricant	J-23444-A
Wheel, three-bearing (if necessary)	See Buell Dealer

#### NOTE

This instruction sheet references service manual information. A service manual for your model motorcycle is required for this installation and is available from a Buell dealer.

#### Kit Contents

See Figure 4 and Table 2.

### REMOVAL

### WARNING

To prevent accidental vehicle start-up, which could cause death or serious injury, disconnect negative (-) battery cable before proceeding. (00048a)

1. Disconnect the battery cables, negative (-) cable first.

#### NOTE

Refer to the service manual for these generalized steps.

2. Remove belt guard.
3. Remove the brake caliper.
4. Remove the idler pulley.
5. Remove the axle and drive belt.
6. Remove the wheel.
7. Remove the sprocket, discarding the screws but saving the washers.
8. Remove the rotor and discard the screws.
9. Discard the axle (if desired).
10. Remove any other model-specific components following the instructions in the service manual.

### INSTALLATION

#### Install Bearings - Brake Rotor Side

1. See Figure 1. Assemble the bolt (Part No. B-50019-8) (1) from the Buell Bearing Installer Kit (B-50019) and the smaller bearing installer (Part No. B-50019-3) (2).
2. Fit the rotor side bearing (Figure 4, Item 3) with the engraved letters facing out.
3. Insert the bolt through the bearing and slide on the large bearing installer (Part No. B-50019-4), the bearing and the washer from the bearing installation kit.
4. Install and tighten the nut to press the rotor side bearing into the wheel race.

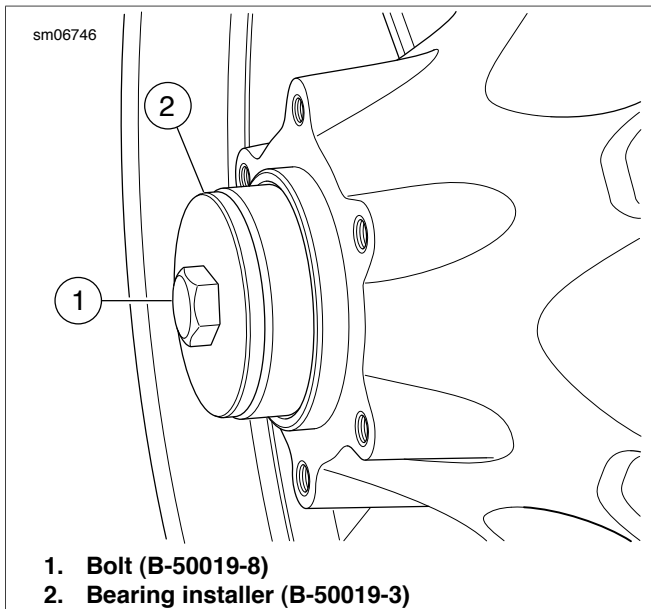


Figure 1. Pressing in the Rotor Side Bearing

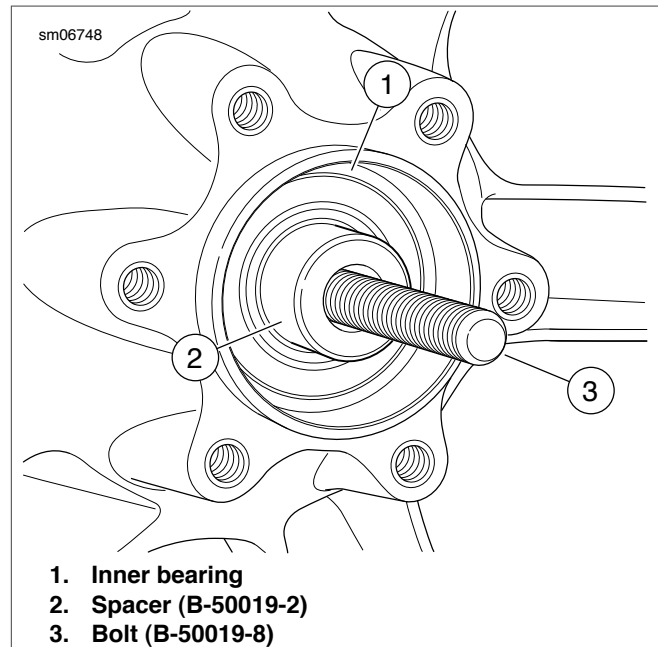


Figure 2. Sprocket Side Inner Bearing, Spacer and Bolt

### Install Bearings - Sprocket Side

1. Assemble the bolt (Part No. B-50019-8) and bearing installer (B-50019-3).
2. Lightly apply pressure lubricant (purchased separately) to the threads of the bolt.

#### NOTE

*Do not press the inner wheel bearing without installing the wheel spacer.*

3. See Figure 2. Slide the bolt through sprocket side of the wheel through the rotor side bearing and slide the wheel spacer (Figure 4, Item 7) over the bolt and inside the wheel.
4. Slide in the long spacer (Part No. B-50019-2) and slide the wheel spacer over the long spacer.
5. Fit the sprocket side inner bearing with the engraved letters facing out.
6. See Figure 3. Slide on the bearing installer cup (Part No. B-50019-6) (1), the bearing (2) and the washer (3). Install the nut (4).
7. Tighten the nut to press in the inner wheel bearing.
8. See Figure 2. Remove the nut, washer bearing and large bearing installer cup.
9. Fit the sprocket side outer bearing with the engraved lettering facing out over the guide.
10. Slide on the large bearing installer cup, bearing and washer. Install the nut.
11. Tighten the nut to press in the outer wheel bearing.
12. See Figure 4. Install the sprocket side bearing seal (8), the rotor side bearing seal (2) and the axle spacer (7).

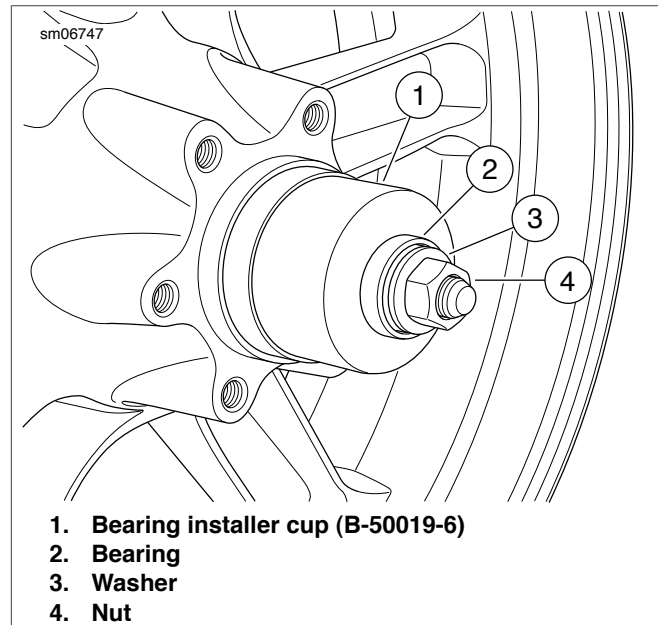


Figure 3. Pressing in the Sprocket Side Inner Wheel Bearing

### Final Assembly

#### NOTE

*Refer to the service manual for the instructions for these generalized steps.*

1. Install the sprocket with new sprocket screws.
2. Install the brake caliper.
3. Install wheel and axle.
4. Install the rotor with new sprocket screws.
5. Install the belt guard.
6. Install any other model-specific components previously removed.

## ⚠ WARNING

Connect positive (+) battery cable first. If positive (+) cable should contact ground with negative (-) cable connected, the resulting sparks can cause a battery explosion, which could result in death or serious injury. (00068a)

7. Connect the battery, positive (+) cable first.

## ⚠ WARNING

After repairing the brake system, test brakes at low speed. If brakes are not operating properly, testing at high speeds can cause loss of control, which could result in death or serious injury. (00289a)

8. Test the brakes.

## SERVICE PARTS

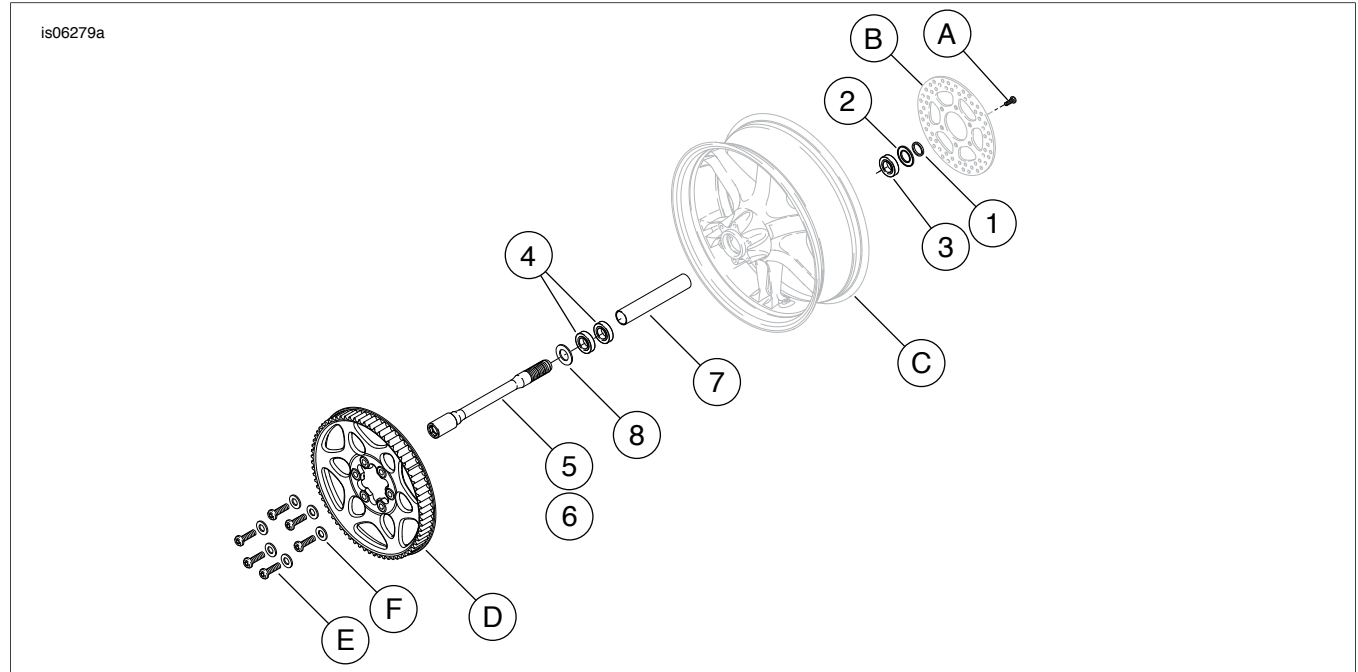


Figure 4. Service Parts: Bearing Kits

Table 2. Service Parts

Item	Description (Quantity)	Part Number
1	Spacer, wheel bearing seal	G0620.5AK
2	Dust seal, wheel bearing (rotor side)	EA0002.5AK
3	Bearing, wheel, rotor side	E0005.5AK
4	Bearing, wheel, sprocket side (2)	E0005.5AK
5	Axle, rear (for <b>Kit G1321.02A8</b> )	G0321.5AK
6	Axle, rear (for <b>Kit G1321.1AM</b> )	G0321.3AM
7	Spacer, rear wheel	G0323.5AK
8	Dust seal, wheel bearing (sprocket side)	EA0002.5AK
<b>Items mentioned in text, but not included in kit.</b>		
A	Disc screw (6) (purchased separately)	
B	Stock rotor	
C	Wheel (purchased separately)	
D	Stock sprocket	
E	Sprocket screw (6) (purchased separately)	
F	Stock sprocket washers (6)	